

HOTEL SOKA

TANGO / Accommodation and others



Time Spent by the Lakeside of Tango, Inspired by Hygge of Northern Europe

Soka is a Hygge-themed hotel in Tango, set on the banks of a beautiful lake (Hygge: Danish for “cozy space” or “good times”). Visitors can spend their time listening to the sound of nature, enjoying the specialties of the Tango and Tajima regions, taking a relaxing break in the hot spring and adjusting the five senses as you relax while watching the flickering flames in the fire lounge. Customer service is provided by a team that shares the same philosophy and flexibly offers a comfortable time and space.

Address	915-15 Kobama, Amino-cho, Kyotango City, Kyoto 629-3113
Access	A 10-min. drive from JR "Amino Station"
Parking	Up to 30 vehicles
Tel	0772-72-1009
Email	
Website	https://soka-kyoto.jp
Twitter	
Facebook	
Instagram	https://www.instagram.com/soka.kyoto/



DESIGN WEEK KYOTO

ARIA FACTORY HOME / ARIASSOCIATES

TANGO / Furniture



"Creating new items through meeting new people"

ARIA Associates is a company that creates custom-made furniture to fit your space. They have stores in Kitashirakawa in Kyoto City and Fukuchiyama, and places the utmost importance on communicating with people directly. The representative, Mr. Ariyoshi, is not a craftsman himself. However, he never allows any compromise; he always reminds himself of their philosophy, "Make people happy with products and heart," and put all his efforts into manufacturing together with his craftsmen. He is also keen to train furniture craftspeople, and is actively accepting the younger generation and students from overseas.

Address	1348 Migouchi, Yosano-cho, Yosa-gun, Kyoto 629-2313
Access	Nearby the Tango Kairiku Kotsu Bus "Migouchi-guchi" Stop
Parking	Up to 5 vehicles
Tel	0772-43-0247
Email	info@aria-kyoto.jp
Website	https://aria-kyoto.jp
Twitter	https://twitter.com/ARIA80424235
Facebook	https://www.facebook.com/AriaYouXianHuiSheariasoshieitsu/
Instagram	https://www.instagram.com/aria_kyoto/



DESIGN WEEK KYOTO

Creative Workshop ITOASOBI

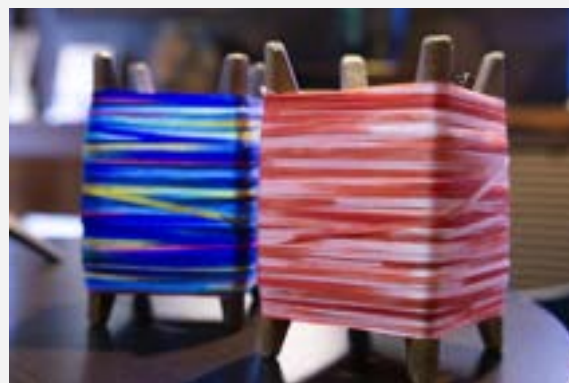
TANGO / Manufacturing of textiles



Artist who is "capable of anything," creating fabric never seen before

Toru Yamamoto loves fashion and has experience of wholesaling fabrics. His most notable strength is his sympathy for designers' feelings who seek fabric that never existed before in the world. He's committed to weaving with machines and has expanded his versatility of technique and knowledge by wanting to create new fabric himself. As a result, people come to him incessantly, asking "Can you make this?" He can also cater to needs of interior design and foreign brands by choosing the best machine and speed for each yarn. He keeps creating "fabric never-seen-before."

Address	1222 Ikuji, Yosano-cho, Yosa-gun 629-2311
Access	Take a taxi from Kyoto Tango Railway "Yosano" Sta. (10 min.), or take the Tango Kairiku Kotsu Bus "Ikuji" Stop
Parking	Up to 4 vehicles
Tel	0772-42-3515
Email	itoasobi@nifty.com
Website	http://www.itoasobi.jp
Twitter	
Facebook	https://www.facebook.com/itoasobi1936
Instagram	https://www.instagram.com/itoasobi1936/



DESIGN WEEK KYOTO

KYOTO PREFECTURAL INSTITUTE for NORTHERN INDUSTRY

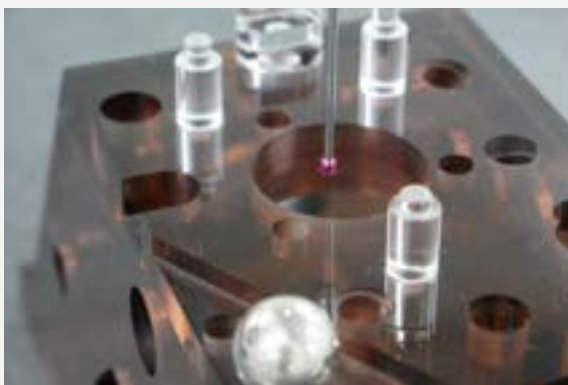
TANGO / Technical support for the manufacturing industry in the Tango region



Brain behind Tango's Monozukuri industry

So-called "Orikin Center" is where DWK participants should visit first. This public institute will guide you through the Tango's Monozukuri (manufacturing) such as weaving represented by Tango Chirimen, machinery, and metal. They have a history of over 100 years, carrying out research, technical support, human resources development, etc. as a public testing and research center of Kyoto prefecture. "Brain of Tango's Monozukuri," with their facilities and professional researchers, are worthy to be called "Brain of Tango."

Address	225 Arayama, Mineyama-cho, Kyotango 627-0004
Access	A 15-min. walk from Kyoto Tango Railway "Mineyama" Sta.
Parking	Up to 20 vehicles
Tel	0772-62-7400
Email	oriki-kikakurenkei@pref.kyoto.lg.jp
Website	https://www.pref.kyoto.jp/oriki/
Twitter	
Facebook	https://www.facebook.com/orikincenter/
Instagram	



DESIGN WEEK KYOTO

SHIONO FOUNDRY

TANGO / Pig iron castings



A sense of unity among "Shionorians" is the driving force for growth

Shiono Foundry is a casting company that produces industrial parts that support Japan's manufacturing. Visitors can watch and feel the heat of melting metal right in front of their eyes, which will be far more impressive than they can imagine. Mr. Shiono, the president of the company, calls his employees "Shionorian" with respect and pride. He is the Shionorian himself who leads the company and takes the utmost importance on the relationships with people, from employees to business partners and all others involved in his business. They have exciting plans to open a café and to open their factory regularly.

Address	1917-1 Kanaya, Yosano-cho, Yosa-gun 629-2421
Access	400 meters from Tango Kairiku Kotsu Bus "Yasai-no Eki" Stop
Parking	Up to 3 vehicles
Tel	0772-42-6288
Email	info@shiono-cast.com
Website	https://shiono-cast.com
Twitter	https://twitter.com/ShionoCast?ref_src=twsrc%5Egoogle%7Ctwcamp%5Eserp%7Ctwgr%5Eauthor
Facebook	
Instagram	https://www.instagram.com/shionocast/



DESIGN WEEK KYOTO

SHIBATA TEXTILE

TANGO / Silk textiles



"Seeking business potential of "super luxurious" custom-made kimono"

Shibata Orimono is known for its "Nuitori (embroidery) Chirimen" technique which can create embroidery-like 3D finish in the course of weaving. They can handle all processes of producing kimono, from making data of patterns to actual weaving. With their techniques, your original kimono can be made into fabric the way you want. Custom-made kimono can be ordered from 1 piece and there is a growing expectation from various industries such as wedding and movie industries. Shibata is working hard to grow the potential of "super luxurious" custom-made kimono business.

Address	869-2 Migouchi, Yosano-cho, Yosa-gun 629-2313
Access	A 10-min. drive from Kyoto Tango Railway "Nodagawa" Sta. or a 3-min. walk from Tango Kairiku Kotsu Bus "Migouchi-guchi" Stop
Parking	Up to 3 vehicles
Tel	0772-42-2843
Email	nuitori@gmail.com
Website	http://www.shibata-orimono.com
Twitter	
Facebook	
Instagram	



DESIGN WEEK KYOTO

TATETSUNAGI

TANGO / Polyester Chirimen products



Weave Thoughts for Someone Special Through Traditional Textile

Tatetsunagi is a unit of three people who are involved in Tango Chirimen fabric production and share the same wish to produce items which connect kindness, region and tradition, just like textiles creating various expressions by the crossing of warp and weft. Their unique designs are produced as designs and then printed by inkjet on polyester Chirimen. Some of their product examples are Tango Chirimen tote bags collaborated with the local supermarket “Nishigaki”, pouches printed with Hirabayashi Dairy “Hiraya Milk” packaging, and custom-made orders.

Address	Weaving Factory: 503 Shimoyamada, Yosano-cho, Yosa-gun, Kyoto 629-2302
Access	Weaving Factory: A 7-min. walk from Tantsu "Yosano" Station
Parking	Up to 3 vehicles
Tel	0772-42-4105
Email	info@tatetsunagi.com
Website	https://tatetsunagi.com
Twitter	
Facebook	
Instagram	https://www.instagram.com/tatetsunagi/



DESIGN WEEK KYOTO

TANIKATSU TEXTILE FACTORY

TANGO / Tango Chirimen textile



"Dedicated to bringing out the ultimate beauty of silk in plain fabric"

Soft and simple fabric requires the highest technique to reduce even the slightest scratch. Tanikatsu Textile Factory's specialty is plain silk kimono fabric. Yoshihiro Taniguchi, the third-generation of the company, once left Tango, however, came to realize the charm of his hometown and decided to take over the family business. Knowing the value and meaning of protecting the tradition of Tango Chirimen, he sticks to the traditional weaving technique which is becoming hard-to-find in Tango. Listen to his passion in his factory filled with weaving machines.

Address	762 Kakezu, Amino-cho, Kyotango 629-3112
Access	A 3-min. walk from Tango Kairiku Kotsu Bus "Asobiguchi" Stop
Parking	Up to 5 vehicles
Tel	0772-72-0402
Email	tanikatsu762@yahoo.co.jp
Website	https://tanikatsu762.wixsite.com/tanikatsu762?fbclid=IwAR2x59dbUmvyIM31MTp8Vi52wdACowqCTs0kcecq1kXQi8edctzg7XUw60
Twitter	
Facebook	https://www.facebook.com/profile.php?id=100057257904806&locale=ja_JP
Instagram	https://www.instagram.com/tanikatsutextilefactory/



TAYUH TEXTILE INDUSTRY

TANGO / Silk textile



Where people come and ask, “Can you make fabric like this?”

One of the biggest weaving factories in Tango, Tayuh Textile Industry has won numerous awards. People keep coming to them and give their request of fabrics they wish to have which attests Tayuh's trusted professionalism both in their personality and techniques. With about 60 weaving machines of different variety, they produce textiles not only for kimono but also for Western style clothing and interior decoration. Their beautiful garden, “Hosenju,” designed by a leading garden designer of Showa period (1926-1989) Mirei Shigemori, is worth visiting, too.

Address	112 Asamogawa, Amino-cho, Kyotango 629-3104
Access	A 30-min. walk from "Amino" Sta., or a 3-min. walk from Tango Kairiku Kotsu Bus "Asamogawa Kumin Kaikan-mae" Stop
Parking	Up to 20 vehicles
Tel	0772-72-0307
Email	info@tayuh.jp
Website	http://www.tayuh.jp
Twitter	
Facebook	https://www.facebook.com/chirimen.tayuh/
Instagram	



TANRYO

TANGO / Textiles



"Expanding the possibilities for "Poly-Chiri," feeling the sea breeze"

What Tanryo is proud of is the spectacular scenic view of the beautiful ocean and the gentle, refreshing sea breeze. Of course, their products of polyester Chirimen, so called "Poly-Chiri," are also delivered with pride. It takes numerous processes to make polyester to be silk-like textile, however, skilled and knowledgeable artisans can create any desired texture as if there are no difficulties. They are eager to collaborate and their expectations grow, anticipating new encounters for exciting future products.

Address	1788 Aza Iwataki, Yosano-cho, Yosa-gun 629-2262
Access	A 23-min. walk from Kyoto Tango Railway "Iwatakiguchi" Sta., or a 2-min. walk from Tango Kairiku Kotsu Bus "Iwataki" Stop
Parking	Up to 10 vehicles
Tel	0772-46-3365
Email	tanryo@ute.ocn.ne.jp
Website	https://tanryo.com
Twitter	https://twitter.com/ikousuke
Facebook	https://www.facebook.com/tanryokyoto/
Instagram	https://www.instagram.com/trip1_tango/



DESIGN WEEK KYOTO

TATAMIYA TATSUZO Sugimoto Tatami Store

TANGO / Tatami products



Explore Tatami for “Feel Good” with a Flexible and Kind Heart

Tatamiya Tatsuzo is dedicated to tatami made mainly from domestic rush, even though the amount of domestically produced tatami mats in Japan has decreased to approximately 10% of the total production. The company selects tatami mats based on its own quality judgments and offers a varied range of products to ensure that you find just the right ones to suit your life. In this area, the beautiful landscape and climate of Amanohashidate still remains, thus by digging deeply into the history and culture spun by the people, they explore in depth the potential of natural domestic materials and the tatami mats made from them, and connect them to the future.

Address	1755 Sumiyoshi, Miyazu City, Kyoto 626-0013
Access	A 14-min. walk from Kyoto Tango Railway "Miyazu" Station or a 2-min. walk from Tango Kairiku Kotsu Bus "Sanno-bashi" Stop
Parking	Up to 2 vehicles
Tel	0772-22-2924
Email	sugimoto.tatamiten@gmail.com
Website	tatsunootoshigo.com
Twitter	https://twitter.com/tatsuzou4g
Facebook	
Instagram	



DESIGN WEEK KYOTO

NIPPON GENSHOSHA

TANGO / Japanese swords, Japanese sword making experience



Aspiring to "Produce Japanese Swords that Reflect the Present" from the Tango Region

Three people who trained together under a master swordsmith in Tokyo opened a company producing and selling Japanese swords in Tango. In olden times, Japanese swords were regarded as people's spiritual amulets and status symbols. Respecting the traditional techniques and culture of Japanese swords, they also share ideas that are not limited to the existing values of people living today. People from around Japan and abroad visit their workshop and feel and interact with the Japanese sword culture. Experience the beauty of Japanese swords at Nippon Genshosh.

Address	314 Miyake, Tango-cho, Kyotango City, Kyoto 627-0212
Access	A 2-min. walk from Tankai bus "Miyake Station" Stop
Parking	Up to 5 vehicles
Tel	0772-66-3606
Email	info@gensho.jpn.com
Website	https://gensho.jpn.com/
Twitter	https://twitter.com/genshousya?t=c98JEv4v5CM18OJL6kf7Yw&s=09
Facebook	https://www.facebook.com/nippongenshosya/
Instagram	https://www.instagram.com/nippongenshosa/



DESIGN WEEK KYOTO

NOGIGEN

TANGO / Agricultural products, agricultural experience



Deliver Crops Bringing a Smile to People

Nogigen is a family-run farm that grows rice, broccoli, melons, Horikawa burdocks and other vegetables under the motto “Be healthy from the core of your body.” In addition to agricultural products, they produce and sell processed items such as Setsubun Mochi (rice cake) and miso. You can energize yourself with the vegetables and rice grown by the members of Nogigen who are always full of smiles and happiness amid the rich natural environment of Tango. They aim to bring their smiles to people through food and food experiences by interacting with nature.

Address	1011 Oyama, Tango-cho, Kyotango City, Kyoto 627-0211
Access	1-min. walk from Tango Kairiku Kotsu bus "Oyama" Stop
Parking	Up to 6 vehicles
Tel	0772-75-1939
Email	oishii.agri.factory@gmail.com
Website	https://nogigen.raku-uru.jp/
Twitter	
Facebook	
Instagram	



PARANOMAD

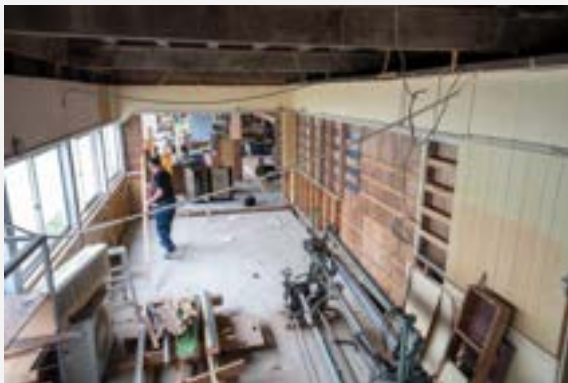
TANGO / Textile



Unique Textile From Tango, Japan

PARANOMAD creates textiles on the theme of “the only one special piece in the world.” The textiles with a unique sensibility created by Ms. Harada, who also has a career in sculpture, bring new life into Tango textiles. Finally, she has opened her own multi-functional base which includes a factory and showroom in Yosano. Feel the space filled with Ms. Harada's love for Tango and textiles.

Address	185-1 Kaya, Yosano-cho, Yosa-gun, Kyoto 629-2403
Access	1-min. walk from Tango Kairiku Kotsu bus “Kayachosha” Stop
Parking	Up to 5 vehicles
Tel	090-7767-0829
Email	textile@paranomad.net
Website	https://paranomad.net/
Twitter	
Facebook	https://www.facebook.com/PARANOMAD
Instagram	https://www.instagram.com/paranomad/



DESIGN WEEK KYOTO

BIO RABBITS

TANGO / Organic vegetables & cafe



Learn what is important for our life through food

Listening to Osamu Umemoto and people working at the farm while touching soil. It's not just about "how great their veggies taste" or "their special farming process." Their story starts from how much they care about the soil. Organic farming does not overly get rid of weeds. Vegetables that grow even among weeds keep bugs away and taste great and strong. They grow vegetables like they raise children. They dream of the day when kids can eat organic veggies for school lunch. You can also get their fresh veggies at "Tentomushi Batake Café (Ladybug Field Café)" next to the farm.

Address	441 Kurobe, Yasaka-cho, Kyotango 627-0142
Access	From Kyoto Tango Railway "Mineyama" Sta., take the Tango Kairiku Kotsu Bus and get off at "Yasaka Bunko-mae" Stop, then a 5-minute walk
Parking	Up to 6 vehicles
Tel	0772-60-8673
Email	info@tentoumushi-batake.com
Website	https://tentoumushi-batake.com
Twitter	https://twitter.com/101064_batake
Facebook	https://www.facebook.com/umechanfarm
Instagram	https://www.instagram.com/tentoumushi_batake/



HIROSE INDUSTRY

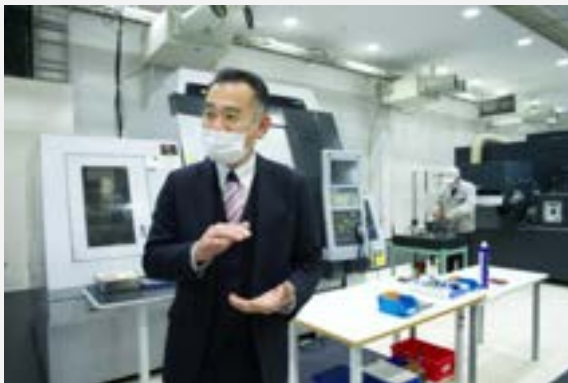
TANGO / Processing of metal precision parts



State-of-the-art facility, cutting technique, and connection between people

A linear drive 5-axis processing machine shows an especially special presence even in Hirose Industry's factory which has a neo-futuristic feel. 5-axis processing integrated processing of every side except the attaching part is realized. High accuracy is maintained and controlled through their processing methods and air conditioning management. Masataka Hirose is passionate about training young employees under the philosophy, "Machines work automatically, but we, people, control them." Enjoy their factory where you can feel the state-of-the-art technique of "professionals who have mastered cutting" and their commitment to "people."

Address	743 Zennoji, Omiya-cho, Kyotango 629-2504
Access	A 5-min. walk from Tango Kairiku Kotsu Bus “Zennoji Kominkan-mae” Stop, or a 30-min. walk from Kyoto Tango Railway Omiya Sta.
Parking	Up to 10 vehicles
Tel	0772-64-3594
Email	hirose-industry@hirose-kogyo.co.jp
Website	https://hirose-kogyo.com/
Twitter	
Facebook	
Instagram	https://www.instagram.com/hiroseindustry/



DESIGN WEEK KYOTO

FILTANGO

TANGO / Tango Chirimen lifestyle items



Comfortable Daily Life with Tango Chirimen Silk with a 300-year History

Filtango is an endeavor started by Ms. Yamane who is also a knit designer pursuing her wish to bring out the new appeal of Tango Chirimen and use it for familiar products and thus connect it to the future. During the event period, workshops will be held in the DWK's information center with the female artisans who support the production of filtango's products, where visitors can enjoy time spent knitting Tango Chirimen. Enjoy the new appeal of Tango Chirimen with the artisans.

Address	843 Sugitani, Mineyama-cho, Kyotango City, Kyoto 627-0012
Access	A 5-min. walk from JR "Mineyama" Station or a 3-min. walk from Tango Kairiku Kotsu Bus "Mineyama Annaisho" Stop
Parking	Available
Tel	090-4026-7442
Email	info@filtango.com
Website	https://www.filtango.com/
Twitter	
Facebook	
Instagram	https://www.instagram.com/filtango_kyoto/?hl=ja



DESIGN WEEK KYOTO

MIZOKAWA FURNITURE STORE

TANGO / Furniture and wood works



Learning Anew from the Past – Legacy Passed to the Future Generation

Softwood or hardwood, board grain or vertical grain, front or back of the wood... The pride of the real craftsman is to identify the “best” of the wood and to make the most of its characteristics in the right place with the right material. Mizokawa’s manufacturing process never permits even the smallest of compromises. The longer you use their furniture, the more your attachment and appreciation grows. They continue to evolve in order to be the “people” and “company” that the world needs, in preparation for the arrival of an era in which values are focused on emotional richness instead of an industrialized society merely pursuing efficiency and productivity.

Address	104 Kuchiono , Omiya-cho, Kyotango City, Kyoto 629-2501
Access	A 10-min. walk from Kyoto Tango Railway “Kyotango Omiya” Station
Parking	Up to 7 vehicles
Tel	0772-64-4334
Email	info@mizokawa.jp
Website	http://www.mizokawa.jp / http://www.kikoe.jp
Twitter	
Facebook	https://www.facebook.com/mizokawakyotango
Instagram	



DESIGN WEEK KYOTO

MIYASHIN

TANGO / Textiles for clothing



Specialist of High-twisted Yarn for Weaving the Future of Tango Chirimen

Miyashin, which has its roots in kimono fabric production, started its business in the Meiji period (1868-1912) and developed “polyester Chirimen” after the war. While their work is based on the techniques for making Tango Chirimen, the technique of high-twisted yarn has been further developed and a variety of weaving machines have been used. On the basis of this technology, Miyashin continues to produce textiles with unique textures that meet the world's high demand, and create fabrics with originality by incorporating new materials.

Address	1166 Iwataki, Yosano-cho, Yosa-gun, Kyoto 629-2262
Access	A 15-min. drive from Kyoto Tango Railway "Amanohashidate" Station, or a 10-min. walk from Tango Kairiku Kotsu Bus "Iwataki" Stop
Parking	Up to 2 vehicles
Tel	0772-46-2059
Email	t.miyazaki@tango-miyashin.com
Website	http://www.tango-miyashin.com
Twitter	
Facebook	
Instagram	



KUKU (Fukuda Corporation)

TANGO / Precious wood, wooden product processing



A Timber Exhibition Space for Experiencing the Richness of Living with Wood

Fukuda Corporation has been engaged in the construction of houses in Tango while also collecting precious woods. In 2017, the company opened “LUMBERYARD”, a timber exhibition space where visitors can experience fine timber up close. “KUKU”, the brand name, is an old name for trees. No one tree is the same in its grain, scent, color or texture. The exhibition space offers a wide range of products from woodworking sundries to single-ply top boards and DIY materials while conveying the beauty and rich character of wood and the richness of living with wood.

Address	3120 Kurobe, Yasaka-cho, Kyotango City, Kyoto 627-0142
Access	A 3-min. walk from Tango Kairiku Kotsu Bus “Kurobe” Stop
Parking	Up to 20 vehicles
Tel	0772-65-2211
Email	info@kukulife.jp
Website	https://kukulife.jp/
Twitter	
Facebook	https://www.facebook.com/kuku.fkd
Instagram	https://www.instagram.com/kuku.life/



DESIGN WEEK KYOTO

CORE MACHINERY

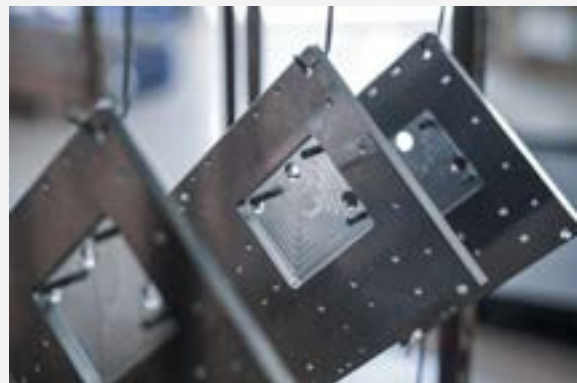
CHUTAN / Aluminum cutting and surface treatment



Aluminum Processing Professionals Living with the Rich Water of Fukuchiyama

Core Machinery is a company with unusual techniques which can perform both the cutting and surface treatment of aluminum. With technology and experience cultivated over many years, the company has supported machinery manufacturers in cutting-edge fields such as semiconductor manufacturing equipment. The surface treatment of aluminum, involves large amounts of soft water, which is an industry unique to the water-rich Fukuchiyama region. It is true that metalworking sites are closing one after another in recent times due to the aging workforce and a lack of successors. However, you will see young technicians at Core Machinery working hard while cherishing the local resources.

Address	777 Miwa-cho Ashibuchi, Fukuchiyama City, Kyoto 620-1444
Access	A 5-min. walk from Nishi Nihon JR Bus "Tanba Shinbashi" Stop
Parking	Up to 3 vehicles
Tel	0773-58-2180
Email	info@coremachinery.co.jp
Website	https://www.coremachinery.co.jp
Twitter	
Facebook	https://www.facebook.com/coremachinery/
Instagram	https://www.instagram.com/coremachinery/



DESIGN WEEK KYOTO

COBA FARM, Inc.

CHUTAN / Tomatoes, rice, tomato juice



A Couple who Revived Abandoned Farmland in just Seven Years

Mr. and Mrs. Kobayashi moved from Sakai, Osaka and started their own farm. Taking advantage of the rich natural environment and climate of Fukuchiyama, such as mountain spring water and temperature differences between day and night, they grow rice, tomatoes, Toromaru eggplant, and a variety of seasonal vegetables. The land was totally abandoned when the Kobayashi couple took it over, but they both worked hard to revitalize it into a wonderful farm in just seven years. The driving force behind their efforts was the desire to grow delicious tomatoes like the ones their grandmother produced. They deliver the vegetables grown with love directly to consumers.

Address	175 Kamioda, Fukuchiyama City, Kyoto 620-1444
Access	A 5-min. walk from JR “Kamikawaguchi” Station
Parking	Up to 5 vehicles
Tel	0773-21-5810
Email	info@cobafarm.com
Website	https://cobafarm.com
Twitter	https://twitter.com/cobafarm
Facebook	https://www.facebook.com/cobafarm/
Instagram	https://www.instagram.com/cobafarm/



CHIKIRIYA

CHUTAN / Japanese confectionery



“Odori Senbei”, a Taste of Fukuchiyama, a city with a Passion for Bon Dancing

In Fukuchiyama, a city with a passion for Bon Odori dancing (a folk dance of Japan performed in August), Chikiriya developed “Odori Senbei,” a rice cracker that embodies the culture of Bon Odori dancing. Chikiriya has been loved for a long time since its establishment in 1920, attested to by the comments of the local people: “A taste of happiness that spreads throughout our heart” and “Crispy, savory, and truly delicious rice crackers.” Odori Senbei which has been awarded the Honorary President's Award by the Prime Minister, is a must-try in Fukuchiyama. Their tradition of developing new crackers and bringing smiles to the faces of Fukuchiyama people has been passed down from generation to generation.

Address	23 Okano, Fukuchiyama City, Kyoto 620-0872
Access	A 15-min. walk from JR “Kamikawaguchi” Station
Parking	Up to 5 vehicles
Tel	0773-22-3632
Email	chikiriya_odori@yahoo.co.jp
Website	https://chikiriya-kyoto.com
Twitter	
Facebook	https://www.facebook.com/chikiriya1920/
Instagram	https://www.instagram.com/chikiriya_odori_fukuchiyama/



HATANO SCREW MANUFACTURING

CHUTAN / OEM factory for industrial screws



High-quality "Screws" Produced by Local Farmers

Though never in the spotlight, the world would be in trouble if screws didn't exist. Hatano Screw Manufacturing is a company that makes screws, the vital element of industry. The company's high level of technology is such that it received an award in the manufacturing category of Kyoto's Excellent Small and Medium Businesses. What is also noteworthy is the dynamic and cooperative way the company is organized. Many of the employees are in fact also working as farmers in Ayabe City. The employees actively support each other in both farming and screw manufacturing which is the key to how they sustain these two very different yet indispensable local industries.

Address	14 Higashitanaka, Takanosu-cho, Ayabe City, Kyoto 629-1263
Access	A 5-min. walk from JR "Yamaga" Station, or 1-min. walk from Aya Bus "Yamaga" Stop
Parking	Up to 3 vehicles
Tel	090-3350-5620
Email	nejihatano@gaia.eonet.ne.jp
Website	https://nejihatano.bsj.jp
Twitter	
Facebook	https://www.facebook.com/profile.php?id=100064256014880
Instagram	



DESIGN WEEK KYOTO

MAIZURU FURURU FARM

CHUTAN / Agricultural park (farm, restaurant, accommodation)



Farm Preserving the Community and Bringing Agriculture and Food Together Again

Maizuru Fururu Farm's mission is to bring agriculture and food closer together again. It was established 15 years ago with the aim of revitalizing the local community based on agriculture. Under the themes of "local production for local consumption," "sixth industrialization," and "interaction between urban and rural areas," the farm offers various facilities, including a buffet-style restaurant with about 100 dishes using as many local agricultural products as possible, a confectionary workshop, a handmade workshop where visitors can experience nature study, a farmers' market, cottages, and a farm where visitors can interact with ponies and sheep.

Address	60 Sezaki, Maizuru City, Kyoto 625-0137
Access	30 min. by Nishioura Bus from JR Higashi Maizuru Station (weekday only)
Parking	Up to 80 vehicles
Tel	0773-68-0233
Email	info@fururufarm.com
Website	https://www.fururufarm.com
Twitter	
Facebook	https://www.facebook.com/fururufarm/
Instagram	



DESIGN WEEK KYOTO

MITSUBA, Ltd.

CHUTAN / Embroidered goods



Embroidery Professionals Evolving with the Times

Mitsuba is a group of embroidery professionals who help customers express their individuality and value through embroidery in Maizuru City, located in the northernmost part of Kyoto. The company has continually developed embroidery over its 50-year history by constantly evolving and changing items to suit the times, including baby and children's clothing, men's clothing, ladies' clothing, sports gear, and general merchandise. Under the philosophy that "good items are born from good people," many of the employees are from the local area and are engaged in the manufacturing process with vigor and vitality. Savor the beauty and elegance of Mitsuba's embroidery with your own eyes.

Address	579 Fuki, Maizuru City, Kyoto
Access	1-min. walk from Kyoto Kotsu Bus "Fuki Nishi" Stop
Parking	Up to 2 vehicles
Tel	0773-75-5514
Email	info@mitsuba.biz
Website	https://www.mitsuba.biz/
Twitter	
Facebook	https://www.facebook.com/mitsubaleaf/
Instagram	https://www.instagram.com/mitsubaleaf_official/



DESIGN WEEK KYOTO

Kawasaki Sudare

TAMBA / Wood, bamboo



Continues to preserve the technique and materials of sudare and pass them on to the future

Sudare (bamboo blinds), Misu (partitioning screen) and Yoshido (summer bamboo sliding doors) are indispensable to the setting of a classical Kyoto home. Kawasaki Sudare has specialized in creating these traditional Japanese fixtures as well as in producing interior fittings and miscellaneous goods suitable for modern living spaces by making full use of the Kyoto sudare technique. At the workshop, visitors can see a number of products and bamboo materials as well as the increasingly valuable Sudare weaving machines.

Address	14-3 Chihara Kataboko, Chiyokawa-cho, Kameoka City, Kyoto 621-0052
Access	A 10-min. walk from JR "Chiyokawa" Station
Parking	Parking Available
Tel	0771 - 22- 6833
Email	tegami@kyo-sudare.com
Website	https://www.kyo-sudare.com/
Twitter	
Facebook	https://www.facebook.com/profile.php?id=100048105648327
Instagram	https://www.instagram.com/kyotosudare1972/



DESIGN WEEK KYOTO

Kyoto Enjoy Farm

TAMBA / Agriculture, food



A farm that "Enjoys" working and living through agriculture

"Revitalize Kameoka with the power of agriculture!" Takeshi Tanimura started farming in Hozu-cho, Kameoka City, as a new farmer. In addition to growing vegetables, he runs a share house in an old house where people who want to be involved in farming can gather, creates opportunities for people to connect with society through farming, and proposes a form of farming that allows people to "Enjoy" various ways of working and living.

Address	48 Yamanobo Hozu-cho, Kameoka, City, Kyoto 621-0005
Access	Take Keihan Kyoto Kotsu Bus from JR Kameoka Station and get off at Kita Hozu (a 10-min. walk from the bus stop)
Parking	
Tel	080-5150-7587
Email	kannsya0907@kyoto-enjoyfarm.com
Website	https://maruji.work/kyoto-enjoyfarm/farm
Twitter	
Facebook	https://www.facebook.com/profile.php?id=100002305090854
Instagram	https://www.instagram.com/kameoka_food_kitchen/



DESIGN WEEK KYOTO

Kyo Miyama Yuba Yumame

TAMBA / Food



Kyoto's Yuba born from the richness of local nature and human hands

Kyoto Miyama Yuba is made using only soybeans and water from Kyoto. The blissful taste is born from the production of the soya beans. The raw materials are high-quality beans nurtured by the nature and people of Tamba. In the factory, which was newly built in 2022, visitors can watch the yuba being made one after another. The café 'Beans cafe.miyama', a renovated old kayabuki thatched-roof house, is attached to the factory, and visitors can observe the structure of the traditional kayabuki house on the second floor.

Address	10 Matabayashi Michinaka, Miyama-cho, Nantan City, Kyoto 601-0731
Access	About 40 min. by car from JR Sonobe Station
Parking	Up to 10 vehicles
Tel	090-7887-8907
Email	itoasobi@nifty.com
Website	https://miyamayuba.com/
Twitter	
Facebook	https://www.facebook.com/miyamayuba/
Instagram	https://www.instagram.com/yuuzu_kyoto_official/



DESIGN WEEK KYOTO

Shoraku

TAMBA / Ceramics



Bringing New Life into the Tradition of Raku Ware and Connecting It to the Future

Sen-no Rikyu, the great master of the tea ceremony, expressed the pinnacle of his aesthetic sense in the form of tea bowls known as Raku ware. The founder of Shoraku, Kichinosuke Sasaki, was devoted to the world of tea ceremony Rikyu founded. He moved his residence from Kyoto to Kiyomizu Temple area in 1905 and opened his kiln, named Shoraku-gama. Today, the fourth generation of Shoraku continues the tradition of Raku ware in the mountain village of Kameoka. Visit Shoraku and feel the depth of Raku ware, which has a clear purpose of being a tea bowl for "chanoyu" (tea ceremony).

Address	2-4 Kamihara Dogatani, Higashi Betsuin-cho, Kameoka City, Kyoto 621-0102
Access	10km from JR Kameoka Station
Parking	Up to 10 vehicles
Tel	0771-27-3001
Email	
Website	https://shorakugama.com/
Twitter	
Facebook	
Instagram	



DESIGN WEEK KYOTO

Zensho (YAMA NO TERRACE)

TAMBA / Food



Smiles born from "Food" of Japan

Aiming for "management that brings smiles to everyone's faces," the company is engaged in the processing and wholesaling of spices, the Hirano Seishoan retail brand of sansho (Japanese pepper), the operation of welfare facilities for the physically challenged people, outdoor facilities, and the restaurant business at their factories based in Aridagawa Town in Wakayama Prefecture, Kikai Town of Oshima County in Kagoshima Prefecture and Magway District of Myanmar. YAMA NO TERRACE, opened in Higashibetsuin-cho, Kameoka City, to support vulnerable shoppers in the community, is a bakery-cafe with a dog run, operated in cooperation with Kameoka City, Higashibetsuin Town, and the company, Zensho. Visitors can experience a model that crosses local issues and welfare for the physically challenged people.

Address	15 Togeichi-an, Higashibetsuin-cho, Kameoka City, Kyoto 621-0103
Access	20 min. by car from Kyoto Jukan Expressway Shino IC
Parking	Up to 10 vehicles
Tel	0771-20-9021
Email	zensho@cans.zaq.ne.jp
Website	https://zensho-net.com/
Twitter	
Facebook	
Instagram	https://www.instagram.com/yamanoterrace2022/



DESIGN WEEK KYOTO

Tanzan Shuzo

TAMBA / Food



Growing rice to brewing sake

Shibata Orimono is known for its “Nuitori (embroidery) Chirimen” technique which can create embroidery-like 3D finish in the course of weaving. They can handle all processes of producing kimono, from making data of patterns to actual weaving. With their techniques, your original kimono can be made into fabric the way you want. Custom-made kimono can be ordered from 1 piece and there is a growing expectation from various industries such as wedding and movie industries. Shibata is working hard to grow the potential of “super luxurious” custom-made kimono business.

Address	7 Yoko-cho, Kameoka City, Kyoto 621-0812
Access	A 13-min. walk from "Kameoka" Station
Parking	Up to 5 vehicles
Tel	0771-22-0066
Email	info@tanzan.co.jp
Website	http://www.tanzan.co.jp/
Twitter	
Facebook	
Instagram	



DESIGN WEEK KYOTO

Nanso Agriculture Association

TAMBA / Farming, food



Experience up-close the growth of cows and daily life

A fattening farmer with a maximum of about 350 head of cattle. They purchase calves at about 10 months of age and keep them until they are at least 20 months old before shipping them out. To avoid stressing the cows, they keep only about three cows per fence and have them lick salt lumps to increase their appetite and replenish minerals. Cattle manure is also sold to local farmers. In the future, they aim to create a local eco cycle which will produce and purchase straw from Kameoka, and use the cattle manure to plow the fields, produce rice, and harvest straw again. Visitors can experience up-close the growth process of cattle until they are shipped as beef, as well as the daily life of a cattle barn.

Address	10 Saeki Sanjudai, Hiedano-cho, Kameoka City, Kyoto 621-0033
Access	A 6-min. walk from Keihan Kyoto Kotsu Bus "Kokudo Saeki" Stop, or 10 min. by car from JR Namikawa Station
Parking	Up to 5 vehicles
Tel	080-1523-2225
Email	
Website	
Twitter	
Facebook	
Instagram	



DESIGN WEEK KYOTO

Nishiki

TAMBA / Wood, bamboo



The beauty and function of Japanese fittings that "perfectly fit" modern living spaces

The workshop of Nishiki, which has been in business for 123 years, is located near the site of Kameyama Castle, which was built by Mitsuhide Akechi during the Sengoku period (1467-1568). Specializing in traditional wooden fittings, the company uses craftsmanship passed down from generation to generation to create furniture, fittings, window frames, shoji paper screens, and other items that match modern lifestyles. With the increasing popularity of renovations in recent years, Nishiki carefully creates "perfect" fittings for spaces that cannot be accommodated with mass-produced, standardized fittings, tailored to each customer's needs, preferences, and the size of the space.

Address	26-7 Uchimaru-cho, Kameoka City, Kyoto 621-0864
Access	A 10-min. walk from JR Kameoka Station
Parking	Up to 1 vehicles
Tel	090-1449-8583
Email	otoiawase@nishikitategu.com
Website	https://nishikitategu.com/
Twitter	
Facebook	https://www.facebook.com/profile.php?id=100047451577820
Instagram	https://www.instagram.com/nishiki3489/



DESIGN WEEK KYOTO

Hiyoshi Forest Resort Yama-no-le

TAMBA / Accommodation with hot spring



A forest resort connected to Kyoto's nature, food, and people

A leisure facility rich in nature, managed and operated by local members ranging in age from their 20s to 80s. The main building of the Yama-no le has a natural hot spring, and the cottages are equipped with barbecue facilities. In April 2023, a strawberry picking facility was opened. The passionate desire of the local staff to "bring enjoyment to as many people as possible" has led to interaction with the local community and the evolution of the facility. Visitors can also experience chopping wood and making rice cakes.

Address	16 Kihatastuno Motoshiya, Nantan City, Kyoto 629-0331
Access	15 min. by bus from JR Hiyoshi Station
Parking	Up to 10 vehicles
Tel	0771-72-3535
Email	yamanoie@fat-g.jp
Website	https://yamanoie.kyoto/
Twitter	
Facebook	https://www.facebook.com/hiyoshi.yamanoie
Instagram	https://www.instagram.com/yamanoie.kyoto/



Koichi Shikko

TAMBA / Lacquer



Passing on lacquer techniques and luster to the next generation

This lacquer studio is located among the beautiful mountains and fields of Kameoka. The studio used to be located in Uji, but moved to Kameoka. They are dedicated to hand-painting lacquer ware to maximize its natural properties and qualities as well as they are involved in the restoration Buddhist altars and other Buddhist altar utensils. They are also keen to hire and train young craftspeople. One of their young craftspeople is a woman who moved from the Tohoku region. They also plan to hold lacquer workshops in the future in order to introduce the beauty of lacquer.

Address	47 Oji Kamiuemaki, Shino-cho, Kameoka City, Kyoto 621-0827
Access	A 26-min. walk from JR Umahori Station
Parking	Up to 2 vehicles
Tel	090-4288-6303
Email	ko14ko1@yahoo.co.jp
Website	http://www.eonet.ne.jp/~kyotohajime/
Twitter	
Facebook	
Instagram	



DESIGN WEEK KYOTO

Masahiro Japanese Sword Factory

TAMBA / Japanese sword



The famous swordsmith's studio in Kyoto

A swordsmith, Yuya Nakanishi, opened his studio in Kameoka in Kyoto after undergoing training in Fukushima(northern Japan). During the Open Factory period, you will be able to see the process of sword forging; multiple types of iron in the forge bellow to soften them and shaping the sword by hammering. Additionally, the history of Japanese swords and how to appreciate them will be explained.

Address	Nishikaya Ishishiki, Honme-cho, Kameoka City, Kyoto 621-0255
Access	20 minutes by car from JR Kameoka Station
Parking	Up to 2 vehicles
Tel	0771-56-8502
Email	syu.nakanishi.tsuchi@gmail.com
Website	https://morinokyoto.jp/masahiro/
Twitter	
Facebook	
Instagram	



DESIGN WEEK KYOTO

Miura Lumber

TAMBA / Wood, bamboo



"Trees change society and the world" - "Connecting Mountains and Towns with Trees Project

Miura Lumber sells original houses constructed with timbers grown in Kyoto, mortar, and natural stones, as well as displaying rare and fashionable trees. Visitors can join a woodcraft workshop in a studio. They offer "Wood Therapy", which aims at reducing your stress and having a calm mindset by touching wood. Come see the process of lumbering to constructing, and join their woodcraft workshop to learn about appeals of wood.

Address	6-1 Nange Ochiai, Higashi Betsuin-cho, Kameoka City, Kyoto 631-0111
Access	An 8-min. walk from Keihan Kyoto Kotsu Bus "Ochiai" Stop
Parking	Up to 20 vehicles
Tel	090-3618-2015
Email	toiawase@miura-seizai.com
Website	https://www.miura-mutenka.jp/
Twitter	
Facebook	https://www.facebook.com/miuseimokuzai/
Instagram	https://www.instagram.com/miuraseizai_since1952/



DESIGN WEEK KYOTO

YU· ME· MI Factory

TAMBA / Construction



Creativity achieved the English Village in Kameoka, Kyoto

Spread out in Nishibetsuin-cho, Kameoka City, is the Great Briten Old Village (GBOV)," a recreation of the English countryside 150 years ago. Restaurants, tea rooms, and lodging facilities are set in the grounds, and even a church is available for weddings. All of the buildings were created using mortar by Maurice, the representative of the company. Buildings can be purchased or ordered. At the store, visitors can purchase antique furniture and miscellaneous goods directly imported from England.

Address	12 Yunohara Mizukumi, Nishibetsuin-cho, Kameoka City, Kyoto 621-0124
Access	One minute walk from Kameoka City Furusato Bus "Okuno" Stop
Parking	Up to 100 vehicles
Tel	090-3726-5386
Email	isoishigeru@gmail.com
Website	https://www.yumemi-factory.com/
Twitter	
Facebook	
Instagram	



DESIGN WEEK KYOTO

Asada Rooftile Factory

KYOTO / Kyoto-style roof tile



Handmade Kyo-kawara tiles, the only kiln in Kyoto

"The more difficult the job is, the more fun and the more rewarding it is as if it challenges our skills." Akihisa Asada, the third-generation heir to Kyoto's only kiln which is specialized in producing roof tiles in Kyoto, continues to focus on handmade roof tiles. Asada's skills are also sought after for the restoration of historical buildings that can only be handmade, and his work adorns the roofs of famous shrines and temples such as Nanzenji Temple and Toji Temple in Kyoto. At the same time, he is active in introducing new technologies such as silk-screening and 3D printing, as well as in collaboration with other people.

Address	5 Butai-cho, Fushimi-ku, Kyoto 612-8338
Access	A 13-min. walk from Kintetsu Tanbabashi Station or a 5-min. walk from Kyoto City Bus "Nishi Tanbabashi" Stop
Parking	Up to 4 vehicles
Tel	090-8147-5985
Email	asada-m@kyogawara.jp
Website	https://kyogawara.jp
Twitter	
Facebook	https://www.facebook.com/kyogawara/
Instagram	https://www.instagram.com/kyogawara/



DESIGN WEEK KYOTO

Amita

KYOTO / Kyoto-style zogan



Experience the beauty of Kyoto Zogan and traditional crafts of Kyoto in one place

Zogan is one of the oldest crafts in Japan. Kyo zogan, in particular, is an iron fabric inlaid with pure gold or silver and finished with lacquer. The delicate and permanent beauty of the gold and silver against the black color is a sight to behold. Amita is a valuable workshop that has inherited the technique of Kyo Zogan, which has become rare even in Kyoto. At the Kyoto Handicraft Center, where the workshop is located, you can purchase not only zogan, but also prints, Japanese dolls, and more.

Address	17 Shougoin Entomi-cho, Sakyo-ku, Kyoto 606-8323
Access	A 3-min. walk from Kyoto City Bus "Kumano Jinja-mae" Stop
Parking	Up to 4 vehicles
Tel	075-761-8001
Email	info@amitacorp.co.jp
Website	https://www.kyotohandicraftcenter.com/
Twitter	https://twitter.com/KyotoHandicraft
Facebook	https://www.facebook.com/kyotohandicraft
Instagram	https://www.instagram.com/kyotohandicraftcenter/



DESIGN WEEK KYOTO

Art Lab

KYOTO / incense



Fragrance manufacturer offering a lifestyle of fragrance

A fragrance manufacturer offering a wide variety of scents reminiscent of flowers, fruits, plants, and the sea. The main store in Kyoto, 201LAB, sells room fragrances by weight under the theme of "any fragrance you want, as much as you want." The company has also developed solid fragrances such as scented ceramic beads and solid perfumes, and is a leader in the fragrance industry. The company also experienced with OEM production receiving inquiries from overseas. They also develop fragrances inspired by the city of Kyoto, and continues to expand the world of fragrances from Kyoto, the city of a thousand years, to the rest of Japan and overseas.

Address	348 Iseya-cho, Nakagyo-ku, Kyoto 604-8066
Access	A 5-min. walk from subway Kyoto City Hall Station
Parking	Not available
Tel	075-366-5502
Email	201lab-fa@artlab.co.jp
Website	https://www.artlab.co.jp
Twitter	
Facebook	https://www.facebook.com/201lab
Instagram	https://www.instagram.com/201lab_kyoto/



DESIGN WEEK KYOTO

Io Seisakusho

KYOTO / Metal processing



Metalworking technology and wisdom evolving with the times

A metalworking company founded in 1919. At the time of its founding, the company created and manufactured traditional metal crafts in Kyoto, but during the war it became a munitions factory and began processing metal parts. In recent years, the company has introduced the latest machine tools and engages in advanced machining and assembly, such as hydraulic valves and semiconductor equipment parts. One of the company's strengths is its ability to design and handle the machining of parts without the necessary jigs. The company has earned the trust of major companies for its sincere attitude of "whatever it takes to get the job done."

Address	8-13 Yamanouchi Yoro-cho, Ukyo-ku, Kyoto 615-0081
Access	A 5-min. walk from Kyoto Bus or Kyoto City Bus "Yamanouchi" Stop
Parking	Up to 3 vehicles
Tel	090-1026-0775
Email	k-io@io-ss.co.jp
Website	http://www.io-ss.co.jp
Twitter	
Facebook	
Instagram	



DESIGN WEEK KYOTO

Kawashima Selkon Textiles

KYOTO / Textiles



All about woven textiles from hand-weaving to machine-weaving

A long-established fabric manufacturer with a history of approximately 180 years. Kawashima Selkon Textiles produces a wide range of products from arts and crafts fabrics such as obi sashes for kimono and rugs to interior products such as curtains. While promoting the traditional handmade manufacturing of obi and rugs, they also engage in the mass production of curtains by machine. The tour includes a visit to the production factory where visitors can see how rugs are woven on one of the world's largest machines and how curtains are dyed in a large pot, and a tour of the Kawashima Textile Museum, which introduces the company's history and projects. There will also be a tour of the Kawashima Textile School, a dyeing and weaving school.

Address	265 Shizuichi Ichihara, Sakyo-ku, Kyoto 601-1192
Access	A 5-min. walk from Kyoto Bus "Komachidera" Stop, or a 7-min. walk from Eizan Train Ichihara Station
Parking	Up to 20 vehicles
Tel	075-741-4323
Email	design_week@ksc.kyoto
Website	https://www.kawashimaselkon.co.jp/
Twitter	
Facebook	https://www.facebook.com/kawashima1843
Instagram	https://www.instagram.com/kawashimaselkon_official/



DESIGN WEEK KYOTO

Kikkabo

KYOTO / Shoes



Fusion of essence of Japan and techniques for leather shoes

“To develop a new foundation for the Japanese footwear culture.” This is the concept of Kikkabo. Adjusting the tradition of Japanese shoe forms and techniques to fit the modern lifestyle, Kikkabo produces custom-made leather shoes. Utilizing cow hide as the main material, Kikkabo wishes to provide a comfortable and refreshing feeling as if your feet were touching a tatami mat.

Address	111-2 Keikain-cho, Kamigyo-ku, Kyoto 602-8406
Access	A 15-min. walk from Subway "Imadegawa" Station, or 5 min.walk from Kyoto City Bus "Horikawa Teranouchi" or "Imadegawa Omiya" Stop
Parking	Not available
Tel	075-414-0121
Email	nojima@kikkabo.jp
Website	https://kikkabo.info/
Twitter	https://twitter.com/kikkabo_nojima
Facebook	https://www.facebook.com/profile.php?id=100063657392496
Instagram	https://www.instagram.com/kikkabo_nojima/



Kyoto Municipal Institute of Industrial Technology and Culture

KYOTO / Research, technical support



Kyoto's center of knowledge for all kinds of manufacturing

Since the early Taisho period, this institute has been based primarily on a public testing laboratory supporting manufacturing in the textile and other industrial fields in Kyoto. Today, as an industrial support organization, they provide research and technical assistance to companies in a wide range of fields, including dyeing and weaving technology, polymers, metals, ceramics, biotechnology, and design, through its 10 research teams. Data and materials related to all aspects of manufacturing in Kyoto are stored here, and researchers from universities and companies rely on it for information and knowledge. Visit this facility and experience Kyoto's broad and profound manufacturing.

Address	Bldg. #9, Kyoto Research park, 91 Chudoji Awata-cho, Shimogyo-ku, Kyoto 600-8815
Access	A 10-min. walk from JR Tambaguchi Station or a 5-min. walk from Kyoto City Bus "City Hospital" Stop
Parking	Not available
Tel	075-326-6100
Email	event_chie@tc-kyoto.or.jp
Website	http://tc-kyoto.or.jp/
Twitter	
Facebook	https://www.facebook.com/tckyo
Instagram	



DESIGN WEEK KYOTO

CASTEM KYOTO LiQ

KYOTO / 3D printing, CT scanning



Updating Kyoto's manufacturing with the cutting-edge technology

Castem was founded 50 years ago to specialize in the manufacture of precise lost-wax castings. In 2018, they opened a brand-new studio only focusing on digital printing in the Saiin area of Kyoto. Their CT scanning machine can visualize the internal structure of an object while their cutting-edge 3D printer can produce a figure from 2D pictures and photos with precise casting.

Address	22 Saiin Taira-cho, Ukyo-ku, Kyoto 615-0022
Access	A 5-min. walk Hankyu "Saiin" Station
Parking	Available
Tel	075-325-1811
Email	kyoto@castem.co.jp
Website	https://www.castem.co.jp/kyoto_liq_bldg/
Twitter	https://twitter.com/castem_liq
Facebook	https://www.facebook.com/LiQCT
Instagram	https://www.instagram.com/explore/locations/161266217832182/liqct/



DESIGN WEEK KYOTO

Kobori

KYOTO / Buddhist utensils



Creating products that connect people with the deities and Buddha

With finely honed techniques and carefully selected materials, Kobori continues to produce Buddhist altar fittings that are appropriate for spaces that connect people with the deities and Buddha. They produce Buddhist altars, Buddhist prayer beads, and other commonly used Buddhist altar utensils as well as they undertakes large projects, such as the production of main images for temples and the construction of the whole interior of main halls, which are only possible with the long history and skills inherited since 1775. In recent years, the company has established a new company, Holy's, and has begun producing and selling altars that express a form of "free-style prayer".

Address	88 Nishino Dodo-cho, Yamashina-ku, Kyoto 607-8301
Access	A 5-min. walk from Kyoto City Bus "Inabano Ue-cho" Stop
Parking	Up to 4 vehicles
Tel	090-3034-2787
Email	umemoto@kobori.co.jp
Website	https://kobori.co.jp/
Twitter	https://twitter.com/kobori_kyoto
Facebook	
Instagram	https://www.instagram.com/kobori.kyoto/



DESIGN WEEK KYOTO

Konkan Shoten

KYOTO / Textiles, clothes



Uncompromising technique and commitment to pure silk Kinran gold brocade

The family motto, "Even a piece of cloth is always our precious customer," was left by Kanbei Kondaya, the founder of Konkan Shoten. It has been passed down to the 13th generation, Yukio Matsui, who has been producing gold brocade, or Kinran, for 270 years. With the creed of responding to each customer's needs to the fullest in terms of color, pattern, texture, etc., the company carefully works out every detail, from design to production direction.

Address	53 Reisen-cho, Nakagyo-ku, Kyoto 604-0011
Access	A 5-min. walk from subway Marutamachi Station
Parking	Not available
Tel	075-241-0168
Email	konkan.since1751@gmail.com
Website	https://kondaya.jp/
Twitter	https://twitter.com/konkan1751
Facebook	https://www.facebook.com/kondaya1751
Instagram	https://www.instagram.com/konkan.since1751/



DESIGN WEEK KYOTO

Sato Kiyomatsu Shoten

KYOTO / Lacquer



Specialist exploring the potential of Japanese lacquer

Sato Kiyomatsu Shoten is a studio which produces "lacquer" that supports various manufacturing processes. Visitors can observe lacquer refining, manufacturing of lacquer products, and lacquer craft classes. Lacquer is a material that can be used in all kinds of manufacturing. They combine various techniques such as maki-e and raden (mother-of-pearl inlay) to design products, plan, make samples, conduct various tests, and carry out full-scale production.

Address	105 Hirano Miyanishi-cho, Kita-ku, Kyoto 603-8357
Access	One-min. walk from Kyoto City Bus "Waratenjin-mae" Stop.
Parking	Up to 6 vehicles
Tel	090-3827-0873
Email	urusi.school@gmail.com
Website	https://urusi.co.jp/
Twitter	
Facebook	https://www.facebook.com/satokiyomatsushoten
Instagram	https://www.instagram.com/satokiyomatsushoten/



DESIGN WEEK KYOTO

Shoyeido Incense Co.

KYOTO / Incenses



The bearer of Kyoto's incense culture continues to evolve with the times

Shoyeido has captured the spirit of Koh (incense) appreciation more than 300 years ago since its founding. They have been actively developing new techniques while upholding traditional methods. Visitors are able to visit the artisan's room with a guide to gain a close look at how high quality incense are produced with the careful work of skilled craftspeople.

Address	Karasuma Nijo, Nakagyo-ku, Kyoto 604-0857
Access	A 3-min. walk from subway "Marutamachi" Station or a 5-min. walk from subway "Karasuma Oike" Station.
Parking	Up to 3 vehicles
Tel	0075-212-5590
Email	incense@shoyeido.co.jp
Website	https://www.shoyeido.co.jp
Twitter	
Facebook	https://www.facebook.com/profile.php?id=100063647526576
Instagram	https://www.instagram.com/shoyeido_incense/



DESIGN WEEK KYOTO

Shokodo

KYOTO / Temple & shrine carpentry



Bring a breath of fresh air to the temple and shrine carpentry

Shokodo is a carpentry company specializing in temple and shrine construction. Although a very young company within the industry, Shokodo continues to practice Japanese carpentry techniques with 1300 years of history while taking in new wisdom along with the ingenuity of its predecessors. Step into their studio and you'll find yourself immersed in the art of wood joinery.

Address	413 Shizuichi Nonaka-cho, Sakyo-ku, Kyoto 601-1122
Access	Right in front of the Kyoto Bus "Shizuhara Nishijin-ori Neck-tie Danchi-mae" Stop.
Parking	Up to 6 vehicles
Tel	075-741-1888
Email	info@kyoto-shokodo.jp
Website	https://www.kyoto-shokodo.jp/
Twitter	https://twitter.com/kyoto_shokodo
Facebook	https://www.facebook.com/kyoto.shokodo/
Instagram	https://www.instagram.com/kyoto_shokodo/



DESIGN WEEK KYOTO

Shinrindo

KYOTO / Textiles, dyeing, printing



Bringing "Kimono Culture" to the wider world with modern sensitivity and technology

Shinrindo is a design office whose keywords are "kimono", "textile", and "design". While its main business is kimono production using inkjet digital printers, including furisode, uchikake, and other formal kimono, the company also offers textile design and "Nuno Lab.", a business using inkjet textile printers that can produce original fabrics from one meter in length, in order to further expand the possibilities. You will experience the fusion of traditional kimono and CG design, and the fusion of traditional and modern sensibilities that is possible only in this day and age, as we continue to embody harmony without being restricted by the conventional framework of kimono.

Address	37-10 Kawashima Namerahi-cho, Nishikyo-ku, Kyoto 615-8106
Access	An 8-min. walk from Hankyu Katsura Station
Parking	Not available
Tel	050-3590-3599
Email	contact@shinrindo-kyoto.com
Website	http://shinrindo-kyoto.com/
Twitter	https://twitter.com/eninaru
Facebook	
Instagram	https://www.instagram.com/eninaru.kyoto/



DESIGN WEEK KYOTO

Tanakanao Senryoten

KYOTO / Dyeing stuff



Professional of dyestuffs supporting Japanese dyeing culture

Since starting business in 1733, Tanakanao Senryoten has specialized in all kinds of dyestuffs for over 280 years. Surprisingly, they had already developed mail-order business with Taiwan, Manchuria, and Korea as well as Japan more than a hundred years ago. They know all about dyeing from natural dyes like indigo or persimmon varnish to synthetic dyes. Visitors can watch various dyeing processes.

Address	312 Tamatsushima-cho, Shimogyo-ku, Kyoto 600-8427
Access	A 2-min. walk from Kyoto City Bus “Karasuma Matsubara” Stop
Parking	Up to 1 vehicles
Tel	075-351-0667
Email	iinfo@tanaka-nao.co.jp
Website	https://www.tanaka-nao.co.jp/
Twitter	
Facebook	https://www.instagram.com/tanakanaosenryuten/
Instagram	https://www.instagram.com/mitsubaleaf_official/



DESIGN WEEK KYOTO

Chikueidou

KYOTO / Metal craft



Tell the ancient aesthetics through the metal craft techniques

Working in the metal craft industry in Kyoto since the late Edo Period, Chikueidou has passed down the tradition over 7 generations. They are dedicated to the hand manufacture of metallic materials such as gold and silver to produce, repair, and restore tea utensils, Buddhist objects, incense tools, etc. Recently, they opened up a shop “Kazariya Ryo” with hopes to broaden their appeal to younger generations.

Address	621 Tachibana-cho, Nakagyo-ku, Kyoto 604-0944
Access	A 7-min. walk from Kyoto City Bus or subway "Kyoto City Hall" Stop/Station
Parking	Not available
Tel	075-241-2636
Email	kazari@wonder.ocn.ne.jp
Website	http://www.chikueidou.com/
Twitter	https://twitter.com/kazariyaryo
Facebook	https://www.facebook.com/kazariya.ryo
Instagram	https://www.instagram.com/mitsubaleaf_official/



DESIGN WEEK KYOTO

Touan

KYOTO / Ceramics



The biggest Kyo-yaki pottery factory creating creative crafts

Since 1922, Touan has been creating pottery retaining the traditional style of the gorgeous and elaborate Kyo-yaki (Kyoto style pottery) whilst adding modern sensibilities into their works. With their research and development team, they have been creating new techniques and products. Moreover, this is the largest factory with the highest number of specialized craftspeople.

Address	38 Sennyuji Torin-cho, Higashiyama-ku, Kyoto 605-0976
Access	A 9-min. walk from JR or Keihan "Tofukuji" Station
Parking	Up to 1 vehicles
Tel	075-541-1987
Email	info@touan.co.jp
Website	https://www.touan.co.jp/
Twitter	
Facebook	https://www.facebook.com/TOUAN1980
Instagram	https://www.instagram.com/touan1980/



DESIGN WEEK KYOTO

Tobari Sewing

KYOTO / Clothes



Sewing FACTORY of "Monozukuri x Regional x Internatinal x Japanese"

Mitsuba is a group of embroidery professionals who help customers express their individuality and value through embroidery in Maizuru City, located in the northernmost part of Kyoto. The company has continually developed embroidery over its 50-year history by constantly evolving and changing items to suit the times, including baby and children's clothing, men's clothing, ladies' clothing, sports gear, and general merchandise. Under the philosophy that "good items are born from good people," many of the employees are from the local area and are engaged in the manufacturing process with vigor and vitality. Savor the beauty and elegance of Mitsuba's embroidery with your own eyes.

Address	4F of the West Bldg. of Kyoto Handi Craft Center, 17 Shogoin Entomi-cho, Sakyo-ku, Kyoto 606-8323
Access	A 10-min. walk from Keihan Jingu Marutamachi Station or a 3-min. walk from Kyoto City Bus "Kumano Jinja-mae" Stop
Parking	Up to 4 vehicles
Tel	0773-75-5514
Email	info@tobari-sewing.com
Website	https://tobari-sewing.com/
Twitter	https://twitter.com/TOBARI_sewing
Facebook	
Instagram	https://www.instagram.com/tobari.sewing/



DESIGN WEEK KYOTO

Nakakura

KYOTO / Construction



A construction company that envisions the streetscape of Kyoto 50 to 100 years from now

Nakakura is a construction company that proposes the creation of homes that are sustainable and comfortable to live in while it blends into the historic Kyoto townscape. Concerned about plastering techniques, which have been declining over time, they employ their own carpenters and are working hard to pass on these techniques to future generations. To solve the coldness of machiya houses in winter, they use a highly insulated and airtight construction method to achieve both comfort and energy savings. The exterior of the house incorporates the essence of traditional machiya design. Nakakura is continuing its efforts to restore a sense of unity and beauty to the streetscape of Kyoto, looking 50 to 100 years into the future.

Address	67-19 Nishinokyo Shokushi-cho, Nakagyo-ku, Kyoto 604-8381
Access	A 5-min. walk from JR Nijo Station
Parking	Not available
Tel	075-841-0182
Email	info@th-nakakura.co.jp
Website	https://th-nakakura.co.jp/
Twitter	
Facebook	https://www.facebook.com/nakakuracojp
Instagram	https://www.instagram.com/nakakura_kyoto/



DESIGN WEEK KYOTO

Nishimura Shoten

KYOTO / Lacquer



Manufacturing the "Haku" that supports the glittering beauty of Nishijin textiles

Nishimura Shoten manufactures "hiki-baku," a type of decoration technique incorporating gold threads used in Nishijin textiles. The technique of hiki-baku is to apply metallic foil such as gold leaf on Japanese paper, which is the same material used for Japanese banknotes, and then heat or specially process it to create a variety of colorful expressions. It is not limited to yarns for textiles, but is expanding its range of applications to interior and building materials and other various fields.

Address	296 Kitakaneyasu-cho, Kamigyo-ku, Kyoto 602-0044
Access	A 7-min. walk from subway Imadegawa Station
Parking	Not available
Tel	075-441-4189
Email	info@maruhaku-nishimurashouten.com
Website	https://www.maruhaku-nishimurashouten.com/
Twitter	
Facebook	https://www.facebook.com/nishimurashouten
Instagram	https://www.instagram.com/maruhaku_nishimurashouten/



DESIGN WEEK KYOTO

Biken Textile

KYOTO / Textile, clothes, printing



The only dyeing factory in Japan with a full line of automatic textile dyeing

One of Japan's leading dyeing factories with a full lineup of three types of dyeing: auto screen analog textile printing that mechanizes hand-printing called Te-nassen, digital inkjet textile printing with flexible pattern repeat and number of colors, and roll engraving textile printing and roll engraving decoupage, which are the only technologies of their kind in Japan. The company's original fabric brand "Asobi-gokoro" offers fashionable and modern bags, scarves, and furoshiki (wrapping cloth) with Japanese patterns that match modern lifestyles, digitally printed using environmentally friendly eco-printing.

Address	22 Kamitoba Tonomori Shimogawara, Minami-ku, Kyoto 601-8153
Access	A 5-min. walk from Kyoto City Bus "Kamitoba" Stop
Parking	Up to 5 vehicles
Tel	075-672-8991
Email	k.hirakoshi@biken-textile.com
Website	https://bikenseni.co.jp
Twitter	https://twitter.com/asobigokoro_kyo
Facebook	https://www.facebook.com/asobigokoro.kyoto
Instagram	https://www.instagram.com/asobigokoro.kyoto/



DESIGN WEEK KYOTO

VIGORE

KYOTO / Bicycles



Functional and beautiful, the legitimate evolution of bicycles

Vigore Kataoka is a bicycle manufacturer whose foundation is Kataoka Bicycles, founded in 1929. In response to the times, Vigore has been pursuing what bicycles should be and has produced "functional and beautiful bicycles. The bicycles, which are based on the technology and know-how cultivated through the history of competition vehicle development, fit in perfectly with the scenery of Kyoto. In addition to manufacturing and sales, they provide consultation and maintenance services, and continues to create a "partner bike" that reflects the wishes of each bicycle owner and can be ridden for a long time. Test rides are available.

Address	55 Iwakuraminami Yonnotsubocho, Sakyo-ku, Kyoto 606-0033
Access	A 1-min. walk from Subway "Kokusai-kaikan" Station
Parking	Not available
Tel	075-791-6158
Email	info@vigore.co.jp
Website	https://vigore.co.jp
Twitter	https://twitter.com/VIGORE_KYOTO
Facebook	https://www.facebook.com/vigore.kyoto
Instagram	https://www.instagram.com/vigore_kyoto/



DESIGN WEEK KYOTO

Butsu Butsu Bu

KYOTO / Pop unit featuring Buddhism



A pop unit that brings the best of traditional techniques to the present day

Butsu Butsu Bu is a unique pop unit featuring Buddhist culture. Its members are artisans in Kyoto including Yohzan Miura (Buddhist sculptor), a lacquer craftsman, a goldleaf craftsman, a carpenter specialized in Buddhist temples and shrines, an orin (Buddhist bell) craftsman, and a craftsman of metal tools. Under the concept of "bringing the best of traditional techniques to the modern age," the group develops products, holds events, and offers hands-on classes to encourage people to enjoy experiencing the culture of Buddhism. With a focus on communicating the wonder and essence of Buddhism and Buddhist altar utensils, they work to create connections between people and Buddhist culture.

Address	564 Hachijo Bomon-cho, Shimogyo-ku, Kyoto 600-8836
Access	A 10-min. walk from JR Kyoto Station or a 5-min. walk from Kyoto City Bus "Shichijo Omiya" Stop
Parking	Up to 5 vehicles
Tel	075-371-0370
Email	info@ryuganji.jp
Website	https://ryuganji.jp
Twitter	https://twitter.com/B2B2BU
Facebook	
Instagram	https://www.instagram.com/b2b2bu/



DESIGN WEEK KYOTO

Benrido

KYOTO / Printing



One of the world's few remaining Collotype ateliers

Benrido was founded in 1887 as a rental bookshop and in 1905 began producing collotypes. Collotype is one of the earliest forms of printing techniques and was invented in France in 1855 as a method for photographic fine art printing. Due to the high level of print and archival quality, a number of important Japanese cultural properties have been reproduced by this process using photography to make the printing plate, overlaying it with strong oil-based ink, and printing using traditional washi paper.

Address	302 Benzaiten-cho, Nakagyo-ku, Kyoto 604-0093
Access	A 3-min. walk from Kyoto City Bus "Kyoto Fucho-mae" Stop or a 7-min. walk from Subway "Marutamachi" Station
Parking	Available
Tel	075-231-4351
Email	info@benrido.co.jp
Website	https://www.benrido.co.jp/
Twitter	https://twitter.com/kyotobenrido
Facebook	https://www.facebook.com/kyotobenrido.shop
Instagram	https://www.instagram.com/kyoto.benrido/



DESIGN WEEK KYOTO

Miura Taikoudo

KYOTO / Taiko Japanese drums



Taiko Studio holding a sound of Japan

Miura Taikoudo started manufacturing Japanese drums in 1789. They carefully choose natural materials only and employ both traditional techniques and new ideas. In that way, they have been maximizing the attractive features within the form of Taiko drums. Miura Taikoudo's highly durable drums are used in a number of festivals in Japan and produce a beautiful sound.

Address	6 Shimotoba Kitaenmenden-cho,Fushimi-ku, Kyoto,612-8497
Access	1-min. walk from Kyoto City Bus "Sancho" Stop
Parking	Not available
Tel	075-221-4124
Email	info@miura-taikoudo.com
Website	https://www.miura-taikoudo.com/
Twitter	
Facebook	
Instagram	



DESIGN WEEK KYOTO

Minori Yanase Shoten

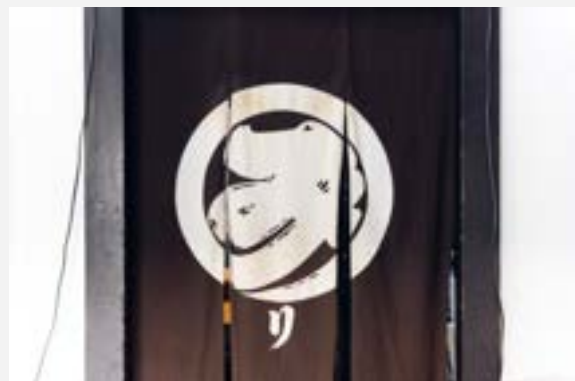
KYOTO / Lanterns



Traditional beauty of lanterns illuminating the city of Kyoto and its people

Minori Yanase Shoten is a chochin (Japanese paper lantern) wholesaler that has inherited traditional techniques and beauty of Japanese chochin since the end of the Edo period. The company handles a wide range of products, including Kyoto chochin for festivals, signboard chochin for stores, and chochin for interior decorations. All of them are made of carefully selected natural materials and manufactured with the skill of a master craftsman under a consistent management system from order to delivery. The company's representative, Mr. Yanase, has acquired his own skills and can also make made-to-order chochin by adding his own lettering and decorations. In recent years, the number of craftsmen has been aging, and the company is making efforts to train young craftspeople.

Address	303 Chuan-cho, Shimogyo-ku, Kyoto 600-8068
Access	An 8-min. walk from Subway Gojo Station
Parking	Up to 1 vehicles
Tel	075-351-1663
Email	minori@kyo-chouchin.com
Website	https://kyo-chouchin.com/
Twitter	
Facebook	
Instagram	



DESIGN WEEK KYOTO

Mimizukuya

KYOTO / Textile, kimono



Kimono store in a traditional Kyoto townhouse that offers the pleasure of "Kimono in Style"

Mimizukuya, opened in the Shijo-Karasuma area of Kyoto in 2014, is a kimono store using western fabrics. Using cotton and linen, they tailor kimonos that are in tune with modern lifestyles. Kimonos with modern retro patterns can be washed at home and are functional for modern lifestyles. It is also fun to match hats, boots, and other items freely without being bound by rules. The store, located in an elegant Kyoto machiya, is decorated with colorful items.

Address	722-10 Shinkamanza-cho, Shimogyo-ku, Kyoto 600-8471
Access	A 7-min. walk from Subway Shijo Station
Parking	Not available
Tel	090-5044-4747
Email	hana@mimizukuya.com
Website	https://www.mimizukuya.com/
Twitter	https://twitter.com/mimiowlya
Facebook	https://www.facebook.com/mimizukuya
Instagram	https://www.instagram.com/mimizukuya/



DESIGN WEEK KYOTO

Morisan

KYOTO / Textile, clothes

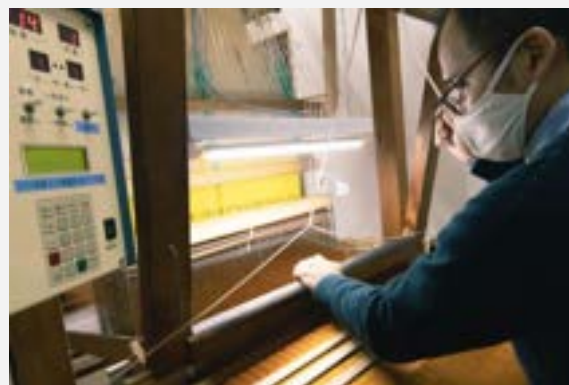


Nishijin brocade "Kinran" born and inherited from Nishijin and Tango

Morisan weaves gold brocade fabric for Hina Ningyo dolls and other traditional Japanese dolls.

Founded in 1921, the company has an office in Nishijin in Kyoto City, where it handles design and other operations, and factories in Yosano in the Tango region. Although demand for Nishijin textiles is declining, Morisan continues to pursue new possibilities for interior and apparel fabrics, and is committed to passing on the Nishijin textile technique as a new product for the modern age. The handiwork of craftsmen who manipulate Nishijin brocade threads, which are unique in color, shape, and material, creates the texture of gold brocade that beautifully reflects the light.

Address	402 Kagaya-cho, Kamigyo-ku, Kykoto 602-8281
Access	A 4-min. walk from Kyoto City Bus "Senbon Nakadachiuri" Stop
Parking	Up to 2 vehicles
Tel	075-432-1205
Email	kawai@mori-san.com
Website	https://www.mori-san.com
Twitter	
Facebook	
Instagram	https://www.instagram.com/kyoto.morisan/



DESIGN WEEK KYOTO

Yume Mandokoro

KYOTO / Japanese confectionery



Confectionery that emerges from the careful and beautiful creation of products

The president, who used to work for a supermarket, was so impressed by the taste of Tamba Azuki (red beans) that he decided to start his own business. He decided to start his own business with two main projects: confectionery production at Yume Mandokoro and the production of side dishes such as tsukudani (food boiled in soy sauce). "Yume Mandokoro" was named after "Nene," who was the wife of Hideyoshi Toyotomi (famous samurai lord in the 16th century) and supported him tremendously. The company's first product, "Nene-no Age Manju," became a big hit. At their cafe in Kodai-ji Temple, they offer the best taste of their prized mochi (rice cake) and anko (sweet bean paste). They are also eager to develop new products for the event marking the 400th anniversary of Nene's death.

Address	530 Shimogawara-cho, Higashiyama-ku, Kyoto
Access	A 10-min. walk from Keihan Gion Shijo Station
Parking	Not available
Tel	075-741-8118
Email	yumemandokoro@yahoo.co.jp
Website	https://www.ujimiyage.com/store/profile14
Twitter	
Facebook	
Instagram	https://www.instagram.com/noan_entokuin/



DESIGN WEEK KYOTO

Yokoyama Bamboo Products

KYOTO / Wood, bamboo



A long-established bamboo studio seeking new potential usages of bamboo

Since 1919, Yokoyama Bamboo has been producing bamboo material unique to Kyoto. Their bamboo items are frequently used as bamboo fences in nationally recognized, important cultural properties and gardens, as well as materials in famous interior and exterior architecture internationally. At their shop "TAKENOKO," they sell bamboo baskets and art works. People can try making a mini bamboo basket in their workshop; beginners welcomed as their experienced craftspeople will instruct carefully.

Address	155 Kameya-cho, Kamigyo-ku, Kyoto 602-8062
Access	A 3-min. walk from Kyoto City Bus “Horikawa Shimochojamachi” Stop
Parking	Up to 1 vehicles
Tel	075-432-3620
Email	yokotake@amber.plala.or.jp
Website	http://www.yokotake.co.jp/
Twitter	https://twitter.com/take_to_take
Facebook	https://www.facebook.com/yokotake.bamboo/
Instagram	https://www.instagram.com/yokoyama_bamboo_product/



DESIGN WEEK KYOTO

ITAYA KOBO SECONDBASE

YAMASHIRO / Construction



“Simple and just right” living spaces filled with the warmth of natural materials

From design to construction, ITAYA KOBO creates homes and furniture that carefully reflect the wishes and ideas of each client, with an emphasis on natural materials. They are committed to creating compact, simple, yet elegant living spaces that make the most of the taste of natural elements, including wood, earth, light, and wind. The former ironworks building was renovated into a space where all aspects of ITAYA KOBO's home building can be seen. In addition to the showroom and office, the building is equipped with a factory where craftsmen can process wood on the spot. In the showroom, a British steel wood stoves that heat the entire house are displayed.

Address	81 Uji Zenpo, Uji City, Kyoto 611-0021
Access	A 12-min. walk from JR Uji Station
Parking	Up to 3 vehicles
Tel	0774-21-0066
Email	info@mitsuba.biz
Website	https://itaya-kobo.com
Twitter	
Facebook	https://www.facebook.com/itayakobo.secondbase
Instagram	https://www.instagram.com/itayakobo_secondbase/



DESIGN WEEK KYOTO

KYOTO gishi*design

YAMASHIRO / Prosthetics



Pursuing the possibilities of "prosthetic limb x design" that transcends barriers

Kusuokagishi Prosthetics & Orthotics manufactures corsets, insoles, and other orthotics and prosthetics. Based on the solid experience they have cultivated in the medical field, veteran craftsmen carefully create products one by one with the spirit of craftsmanship from the viewpoint of people with physical problems. They are trusted by athletes and medical professionals. Products created through collaboration items and special projects under the company's "KYOTO gishi*design" initiative will be on display. Under the theme of "prosthetic devices x design," future developments will be discussed with the participants.

Address	29-4 Kohata Hanazoroe, Uji 611-0002
Access	A 10-min. walk from JR/Subway/Keihan "Rokujizo" Station
Parking	Up to 2 vehicles
Tel	0774-32-6195
Email	0774-32-6195@kusuoka-gishi.co.jp
Website	https://kusuoka-gishi.co.jp/
Twitter	
Facebook	https://www.facebook.com/KYOTO.gishi.design
Instagram	https://www.instagram.com/kyoto_gishi_design/



DESIGN WEEK KYOTO

Takano Chikko

YAMASHIRO / Bamboo



Bamboo crafts that inherits the natural beauty and tradition discovered by Sen Rikyu

The first president of Takano Chikko founded the company in 1968 as a tea ceremony utensil shop. Since then, his passion and skills have been passed down to the present day. The company handles a wide range of products, from tea ceremony utensils to cutlery, sundries, and accessories, using bamboo which are cut and milled by the company itself and old wood from shrines and temples. Their Shop & Gallery Chikubuen is surrounded by a beautiful bamboo grove and is adjacent to scenic nature such as the woods of Nagaoka Tenmangu Shrine and Hachijogaike Pond. The shop introduces products that highlight the craftsmanship and charm of the materials, and offers workshops and special exhibitions by artisans, providing a place to experience and learn.

Address	Head office: 14-15 Shoryuji Higashi Ochbe, Nagaokakyo City, Kyoto 617-0836 / Shop & Gallery Chikubu-en: 2-15-15 Tenjin, Nagaokakyo City, Kyoto 617-0824
Access	Head office: A 20-min. walk from JR Nagaokakyo Station
Parking	Up to 5 vehicles at Chikubu-en
Tel	080-2068-4367
Email	takano-chikubuen@takano-bamboo.jp
Website	https://www.takano-bamboo.jp/
Twitter	
Facebook	
Instagram	https://www.instagram.com/takanochikko/



Nango

YAMASHIRO / Metal processing



Fusion of tradition and technology in metalwork

Craftspeople of Nango are producing the hard machine elements including low demand metal parts by combining cutting-edge technology and programming. Additionally, Nango is manufacturing a jig for machinery and power saving machine. Stereogram used to be limitedly printed on the plain paper, however Nango has invented a new 3D printing technology which can be applied for all textures. "Nango printing" has obtained a patent.

Address	80-36 Shirakawa Kawanoboridani, Uji 611-0022
Access	A 2-min. walk from Kyoto Keihan Bus "Yu-yu-no Sato" Stop
Parking	Up to 4 vehicles
Tel	0774-28-3141
Email	office@nango-kyoto.co.jp
Website	https://www.nango-kyoto.co.jp/
Twitter	
Facebook	https://www.facebook.com/NangoKyotoMain
Instagram	



DESIGN WEEK KYOTO

Nisso Kogyo

YAMASHIRO / Metal processing



A group of engineers who finish metals into the desired shape

Nisso Kogyo is a group of 4D processing engineers who use state-of-the-art processing machines to create the desired shape of stainless steel, aluminum, copper, and other metals. The company has a complete support system for manufacturing from scratch, starting from the drawing stage in consultation with clients. While the company's main products are industrial parts for automobiles and medical care, it is also active in developing and collaborating in a wider range of fields.

Address	77-1 Megawa, Makishima-cho, Uji City, Kyotoi 611-0041
Access	A 10-min. walk from Kintetsu "Mukaijima" Station
Parking	Up to 5 vehicles
Tel	0774-23-3499
Email	skygood@nisso-k.co.jp
Website	https://nisso-k.co.jp/
Twitter	https://twitter.com/nissokogyo
Facebook	https://www.facebook.com/nissokyoto
Instagram	https://www.instagram.com/nissokogyo/



DESIGN WEEK KYOTO

Higashi String Instrument Factory

YAMASHIRO / Music instruments



Only one large-scale string instrument factory in Japan

Over the past half-century, Higashi String Instrument Factory has been making contrabass, viola da gamba, and cello. From the process of choosing materials to coating, the artisans make instruments carefully with traditional Japanese carpentry tools. Their instruments produce stately and extensive sounds and their balanced sounds make each one distinctive. The company also accepts requests for made to order string instruments.

Address	138-2 Ochiai, Makishima-cho, Uji City, Kyoto 611-0041
Access	A 10-min. walk from Kintetsu Mukaijima Station.
Parking	Up to 4 vehicles
Tel	0774-22-3227
Email	info@oriente.jp
Website	http://www.oriente.jp/
Twitter	
Facebook	
Instagram	



DESIGN WEEK KYOTO

Free Zone

YAMASHIRO / Metal processing, instrument



Guitar maintenance with the skill and flair of a musician + craftsman

You can trust Free Zone with all your guitar tuning and repair needs. That's because the owner is active as a vocalist and guitarist in a heavy rock band. He diagnoses the condition of instruments from his perspective and senses because he is a musician, and handles each and every one of them with the user's feelings more important than anything else. It is no wonder that he is trusted by many guitarists, as he not only adjusts strings and necks, but also understands even the smallest electronic components and the habits of the user. He is always available for hands-on experiences such as changing guitar strings.

Address	19-1 Gokasho Hirano, Uji City, Kyoto 611-0011
Access	A 10-min. walk from JR Obaku Station
Parking	Up to 1 vehicles
Tel	070-4779-3622
Email	freezone.uji@gmail.com
Website	
Twitter	
Facebook	
Instagram	

